



### Depend on Wigluv for all CRITICAL EXTERIOR WEATHER-SEALING DETAILS.

Wigluv is a tenaciously sticky, low-profile, acrylic sealing tape. Constructed of a special vapor-permeable polyolefin (PO) film, reinforcing mesh, and pressure-sensitive glue, SIGA-Wigluv will bond even the most difficult substrates in extreme climate conditions. Primer is required for masonry and soft fiberboard.

#### CHARACTERISTICS

ROLL DIMENSIONS	2.4" x 131' 4", 6", 9" x 82'
THICKNESS	14 mils
WATER VAPOR TRANSMISSION	1.7 US perms
UV STABILITY	12 months

- ✓ high adhesive strength, in both hot and cold temperatures
- ✓ semi-permeable (1.7 US perms) material allows damp substrates to dry out
- ✓ split release paper on rolls 4" and wider makes application fast and accurate



## Seams and Overlaps



- Align Wigluv 60 with the dashed tape-centering line, imprinted along the factory edge
- For panelized materials, center Wigluv 60 evenly over the Joint

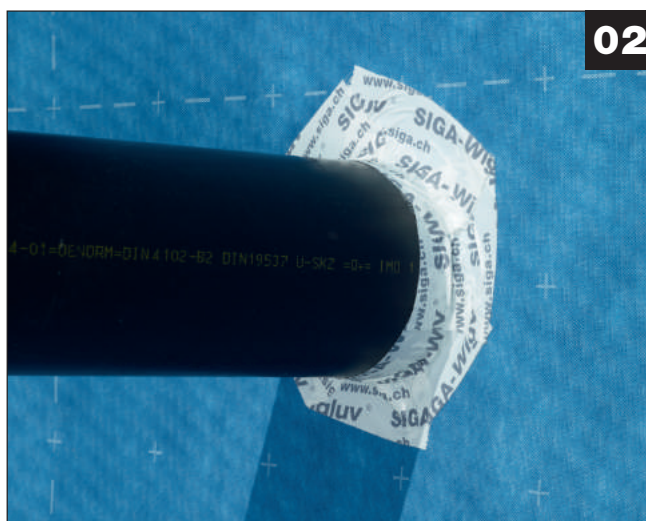


- Apply it without tension and creases and press on firmly with hand pressure

## Round penetrations



- Apply Wigluv 60 pieces half on the penetration and half on the wall
- Start from the bottom and work to the top
- Press firmly to adhere and seal Wigluv 60 to the penetration



- How it should look

All SIGA products are backed by a 10 year limited warranty. Reference [siga.swiss](http://siga.swiss) for complete details. We want you to maximize the performance potential of Wigluv on your project. Contact one of our Application Advisors for assistance, from architectural details to jobsite training.