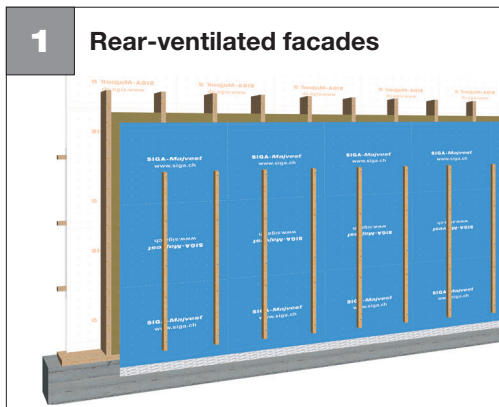




Wall: Timber construction

Windtight and rainproof on the outside

Mounting the facade membrane



- Majvest is suitable for rear-ventilated facades with closed facade covering



- Apply Majvest with the lettering facing you



After sealing:

- For final attachment of the membrane mount counter slatting **in structure direction directly on the bearing structure**



Majvest®

P. 126